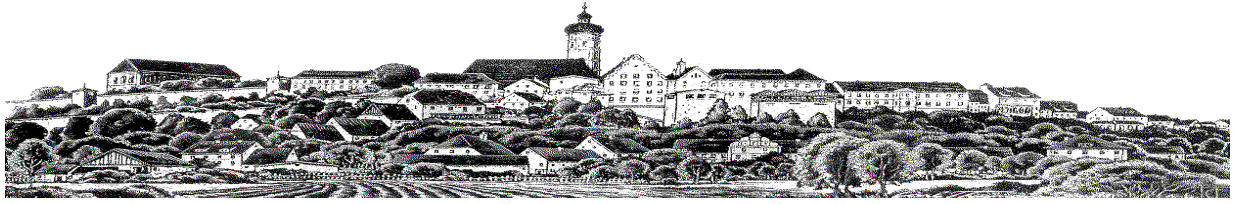
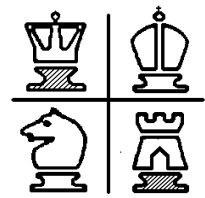
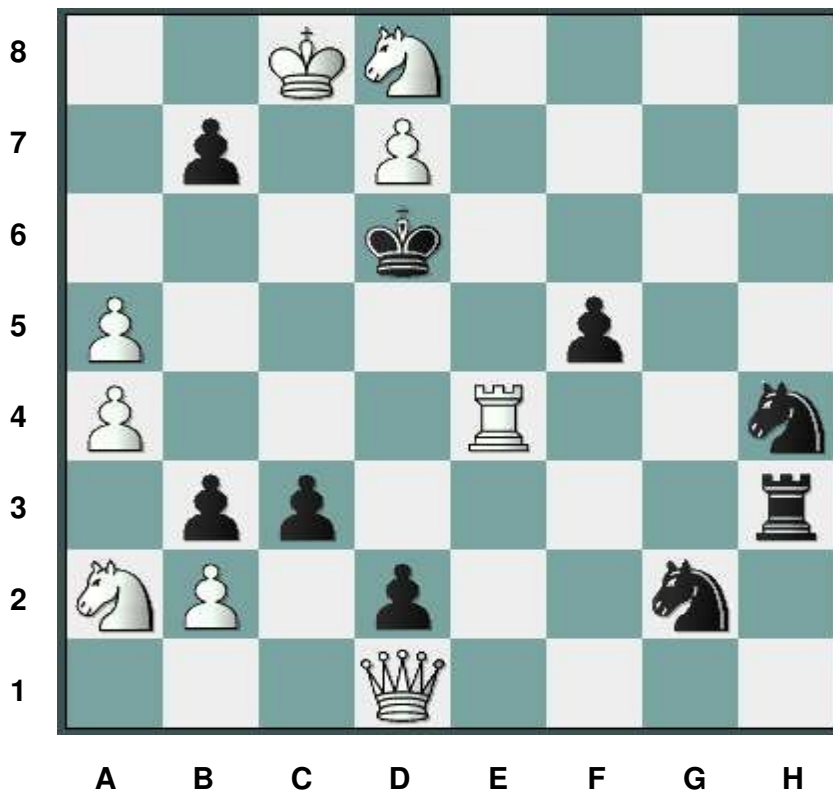


# Schachfreunde Dachau 1932 e.V.

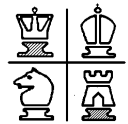
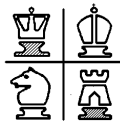


## Schachrätsel des Monats Februar 2013

Matt in 3 Zügen  
Weiß am Zug



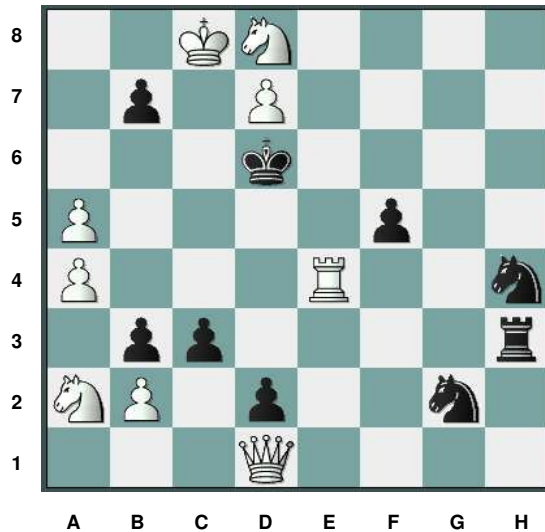
Viel Spaß beim Lösen!



## Lösung **Schachrätsel des Monats** Februar 2013

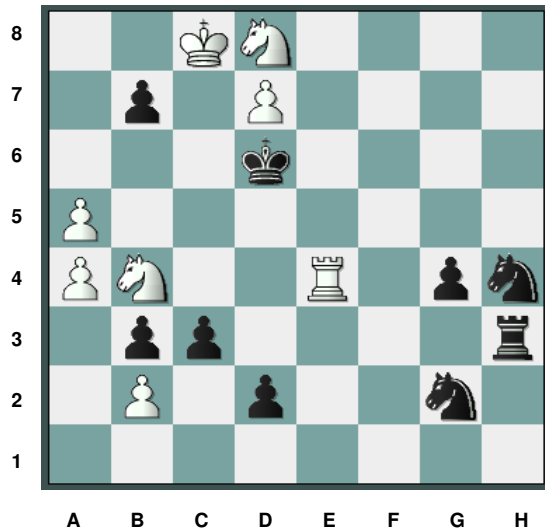
Matt in 3 Zügen  
Weiß am Zug

Der Lösungszug ist : Dg4



Nun hat schwarz eine Vielzahl von möglichen Zügen, doch keiner bringt die Rettung  
1. ... fxc4, 2. Sb4 und Sxb7 setzt matt.

Alternativen:



1. +- (#2): 1...fxg4 2. Sb4 cxb2 3. Sxb7#
2. +- (#2): 1...fxe4 2. Dxe4 d1D 3. Sxb7#
3. +- (#2): 1...Tf3 2. Sxb7+ Kc6 3. Sb4#
4. +- (#2): 1...bxa2 2. Td4+ Ke7 3. Dg7#
5. +- (#2): 1...Td3 2. Sxb7+ Kc6 3. Sb4#
6. +- (#2): 1...Te3 2. Sxb7+ Kc6 3. Sb4#
7. +- (#2): 1...cxb2 2. Sxb7+ Kc6 3. Sb4#
8. +- (#2): 1...c2 2. Sxb7+ Kc6 3. Sb4#
9. +- (#2): 1...Sf4 2. Dxf4+ Kd5 3. De5#
10. +- (#2): 1...b5 2. Sb7+ Kc6 3. Sb4#
11. +- (#2): 1...b6 2. Sb7+ Kc6 3. Sb4#
12. +- (#2): 1...Kc5 2. Sxb7+ Kc6 3. Sb4#
13. +- (#2): 1...Se1 2. Sxb7+ Kc6 3. Sb4#