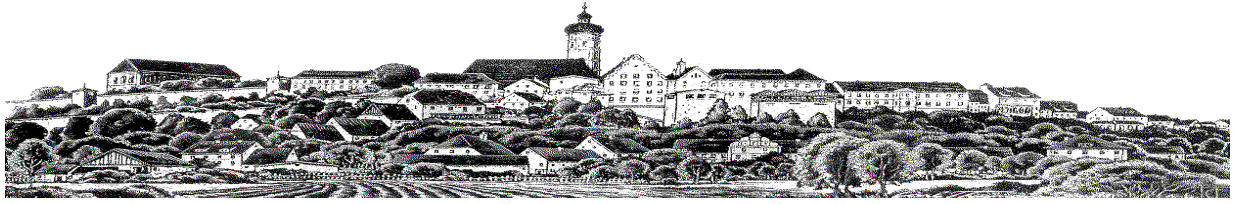
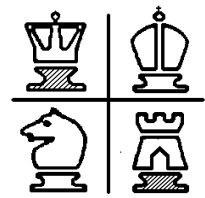
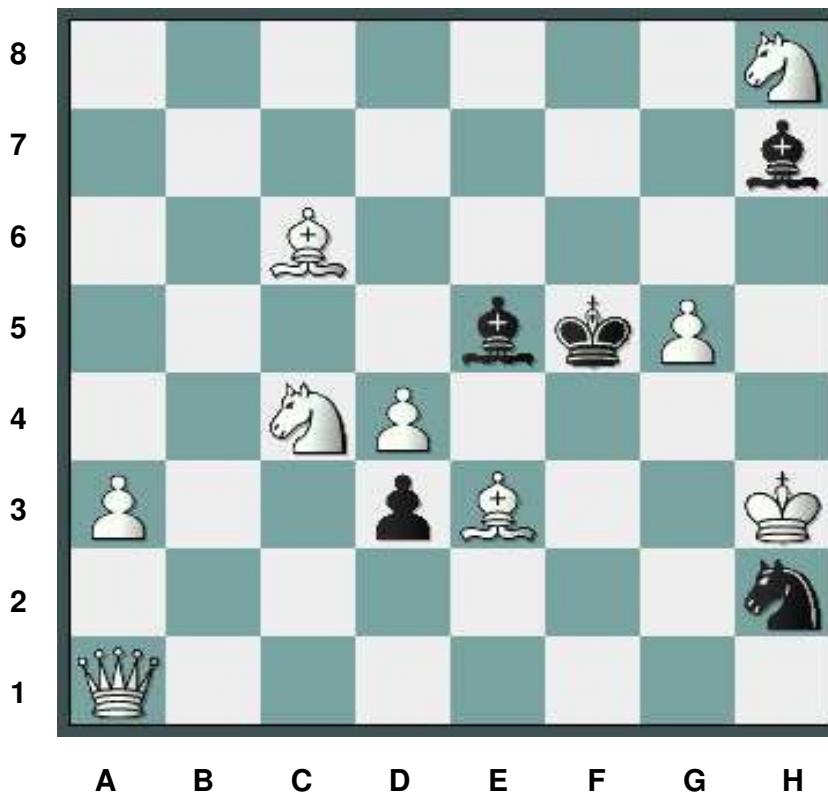


# Schachfreunde Dachau 1932 e.V.

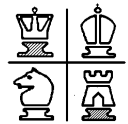
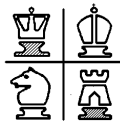


## Schachrätsel des Monats O k t o b e r 2 0 1 3

Matt in 3 Zügen  
Weiß am Zug



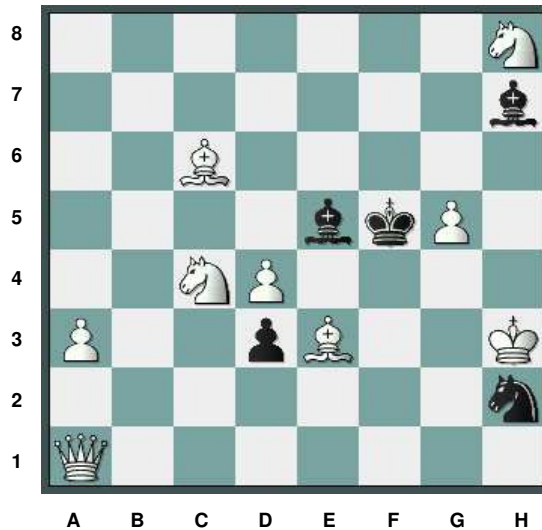
Viel Spaß beim Lösen!



## Lösung **Schachrätsel des Monats** Oktober 2013

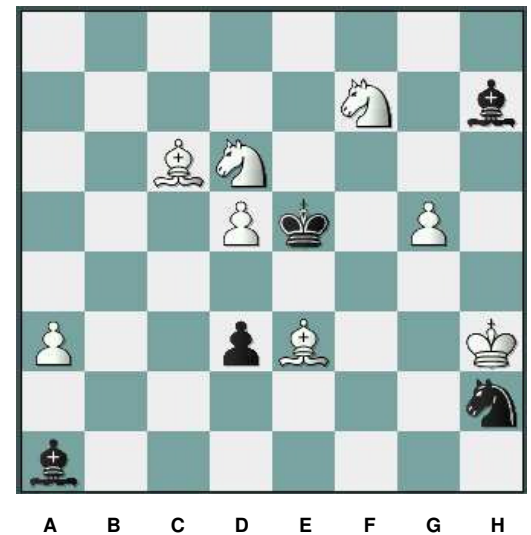
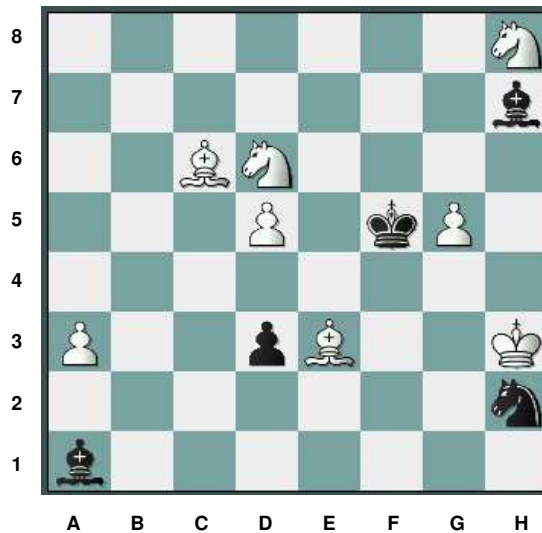
Matt in 3 Zügen  
Weiß am Zug

Der Lösungszug ist : **d5**



Schlägt der Läufer die Dame 1. ... Lxa1  
folgt 2. Sd6+

2. ... Ke6 3. Shf7#



alternativ:

1. +- (#2): 1... Sf3 2. Dxe5+ Sxe5 3. Sd6#
2. +- (#2): 1... Lxa1 2. Sd6+ Ke5 3. Shf7#
3. +- (#2): 1... Lc7 2. Df6+ Ke4 3. d6#
4. +- (#2): 1... Lb8 2. Df6+ Ke4 3. d6#
5. +- (#2): 1... Sg4 2. Ld7+ Ke4 3. Dh1#
6. +- (#2): 1... Lg3 2. Df6+ Ke4
7. +- (#2): 1... Lxh8 2. Sd6+ Kg6 3. Le8#
8. +- (#2): 1... Lb2 2. Sd6+ Ke5 3. Shf7#
9. +- (#2): 1... Lc3 2. Sd6+ Ke5 3. Shf7#
10. +- (#2): 1... Ld4 2. Sd6+ Ke5 3. Shf7#
11. +- (#2): 1... Ke4 2. d6+ Kf5 3. Dxe5#
12. +- (#2): 1... Lf4 2. Df6+
13. +- (#1): 1... Ld6 2. Sxd6#